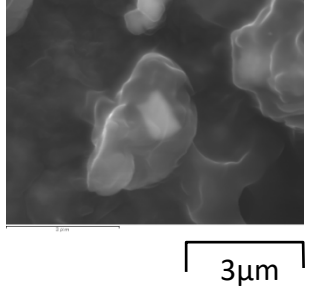
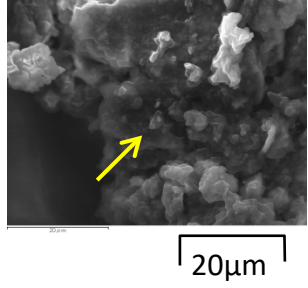
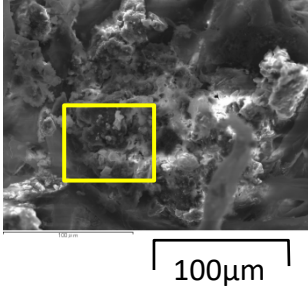
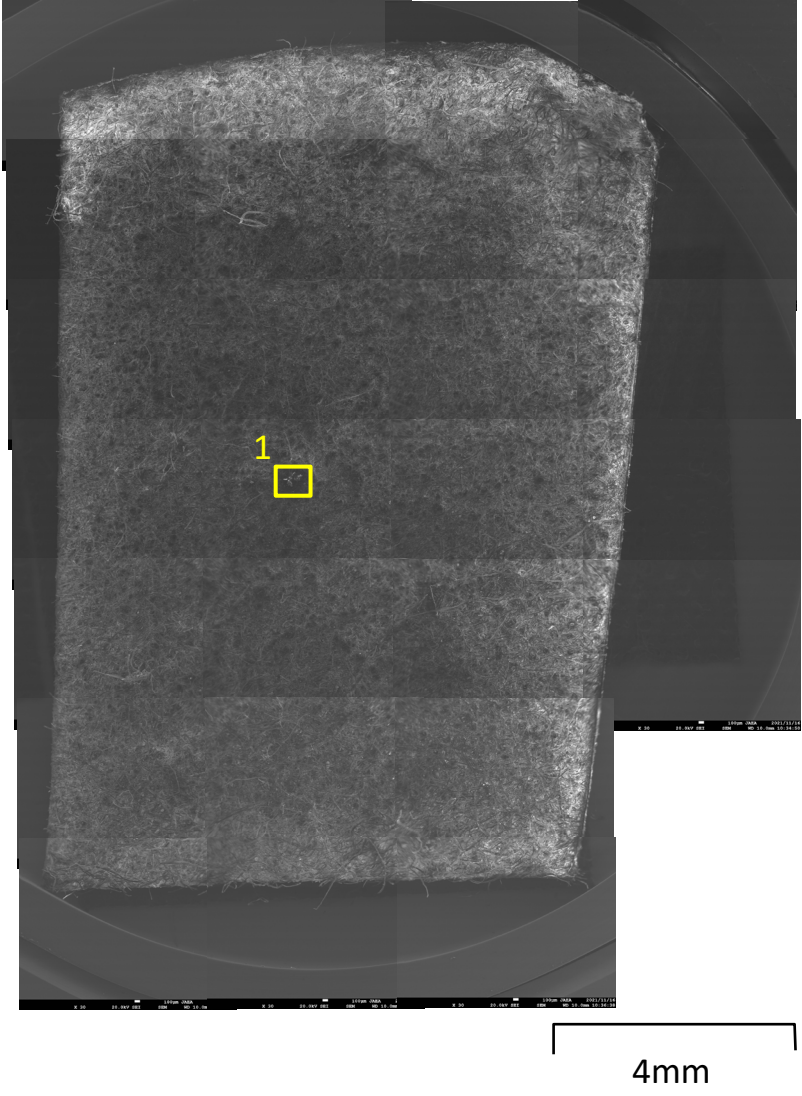
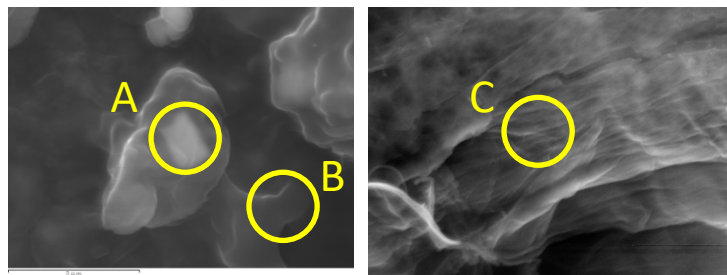


2号機X-6ペネ調査装置付着物1(XM212012)
全体SEI像

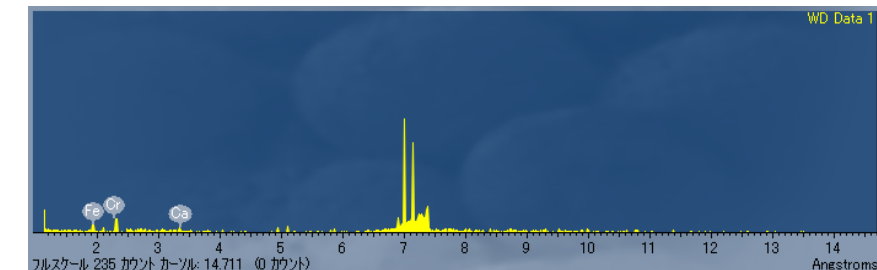
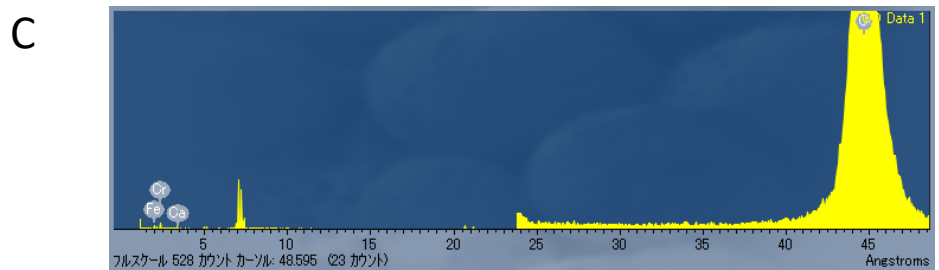
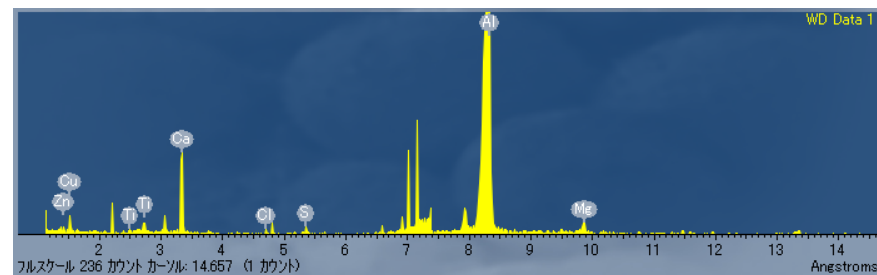
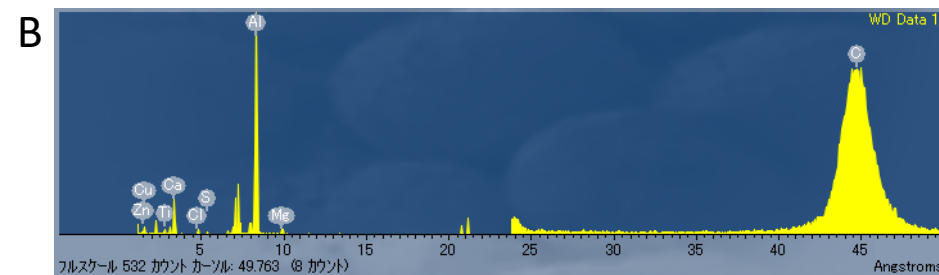
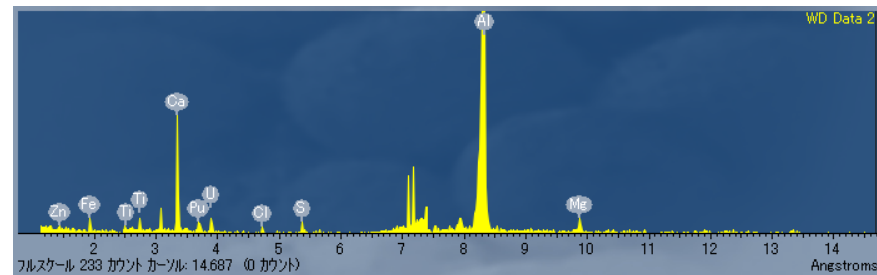
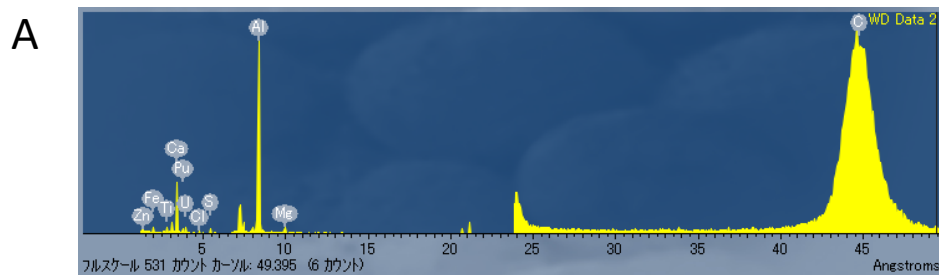


2号機X-6ペネ調査装置付着物1(XM212012)

WDS点定性分析

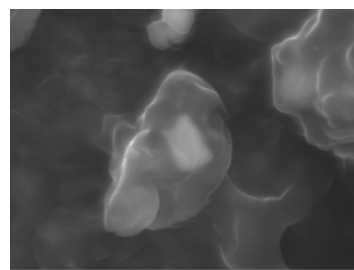


A: U粒子上
B: U粒子以外の粒子上
C: スミアの繊維上

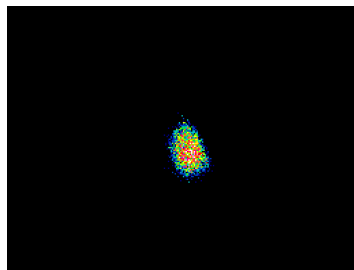


2号機X-6ペネ調査装置付着物1(XM212012)

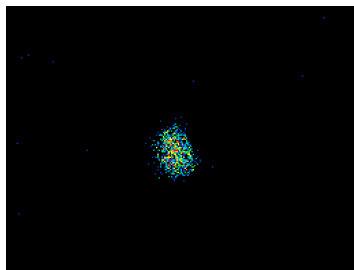
各元素面分析(高倍率)1/2



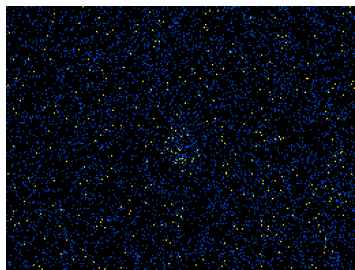
SEI 3μm



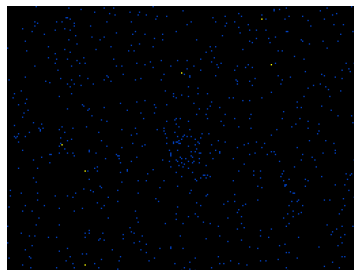
U 27



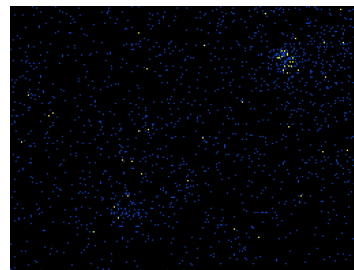
Pu 13



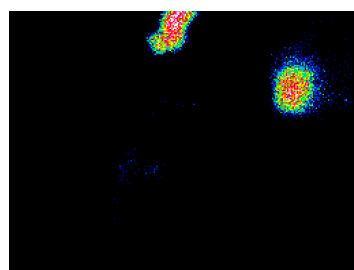
Cs 4



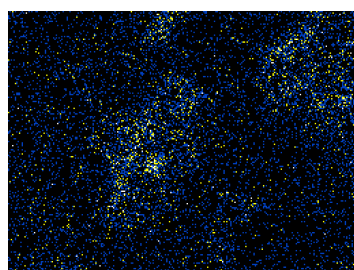
Zr 1



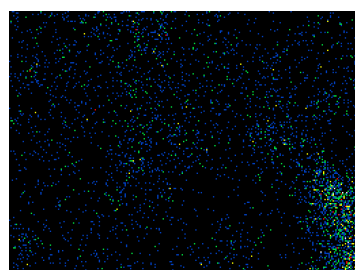
Si 8



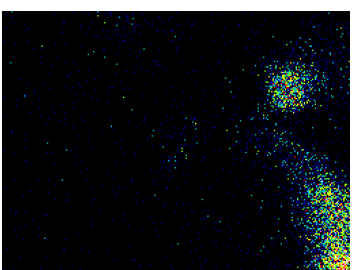
Fe 40



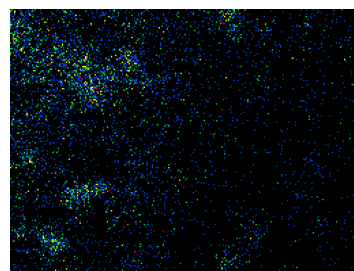
Cr 4



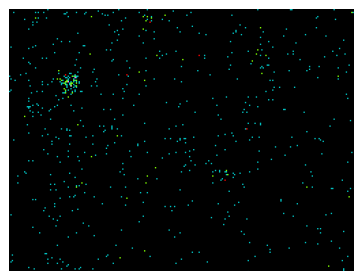
Ni 8



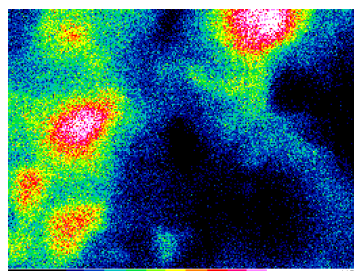
Zn 10



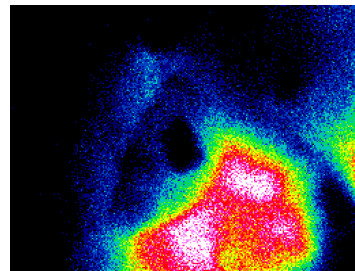
Mo 8



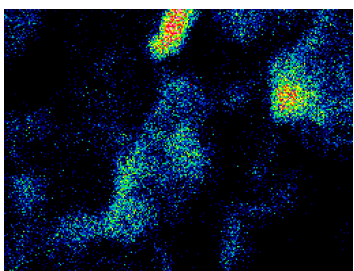
Sb 7



Ca 110

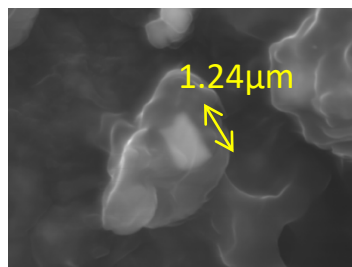


Al 190



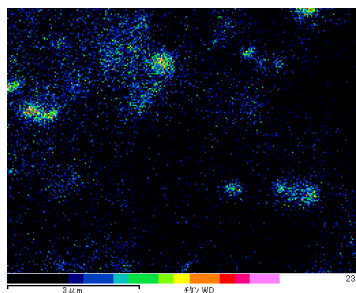
O 34

2号機X-6ペネ調査装置付着物1(XM212012) 各元素面分析(高倍率)2/2

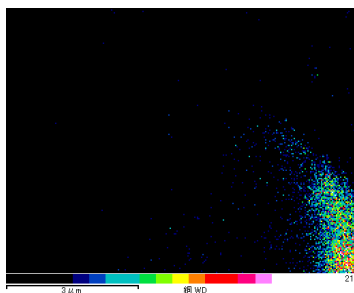


SEI

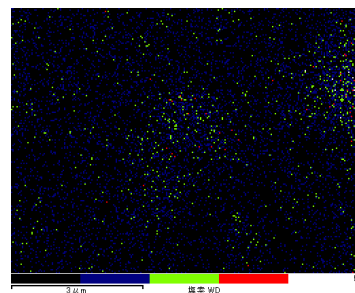
3 μm



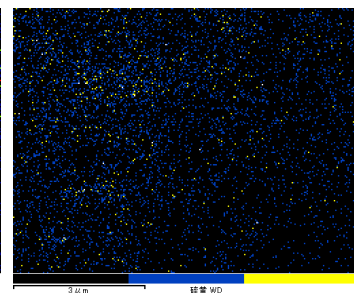
Ti



Cu



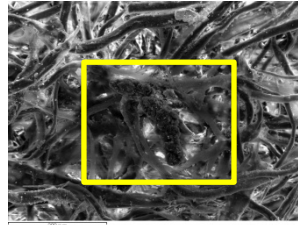
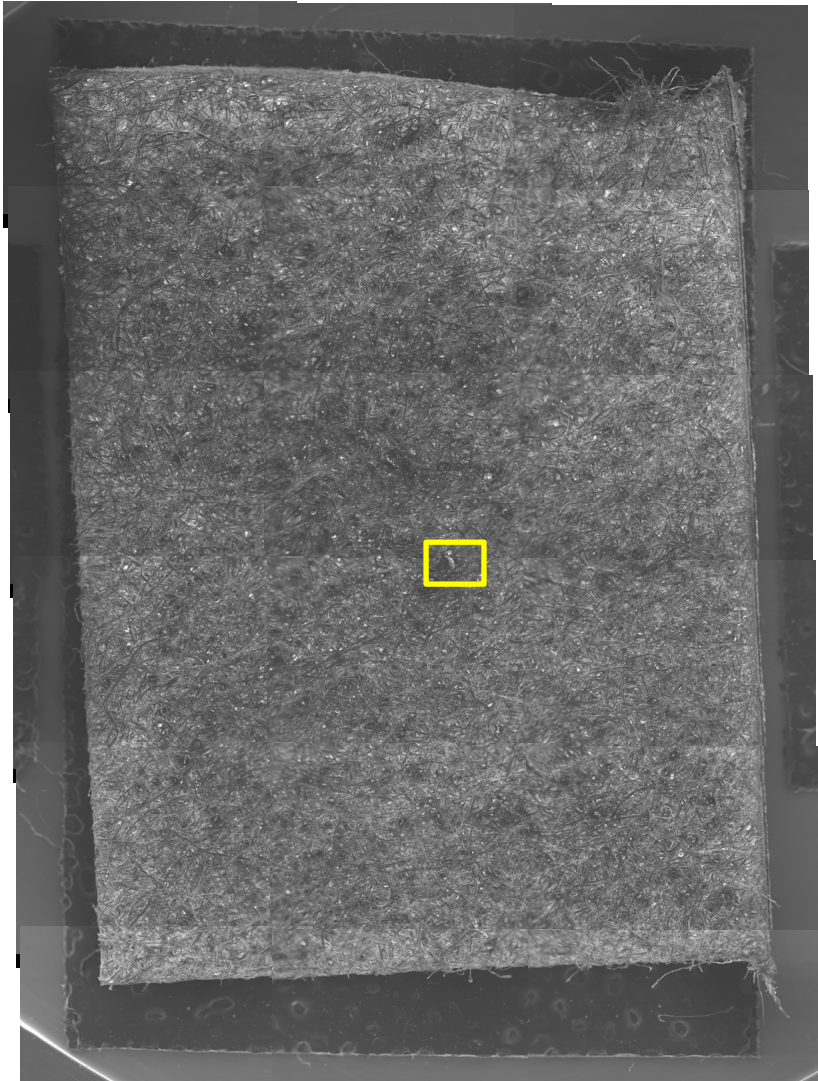
Cl



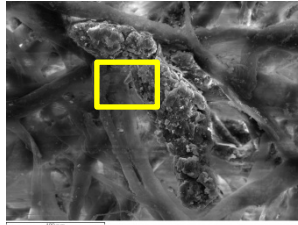
S

2号機X-6ペネ調査装置付着物2 (XM212022)

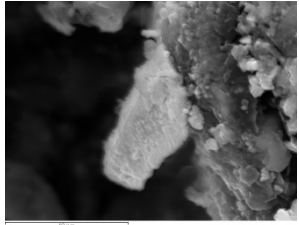
全体SEI像



200μm



100μm

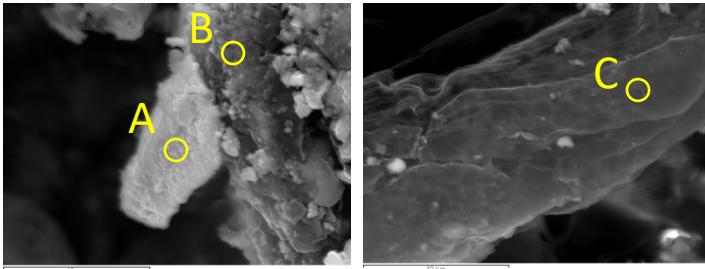


10μm

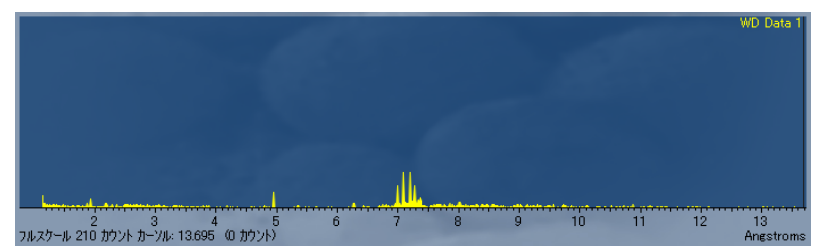
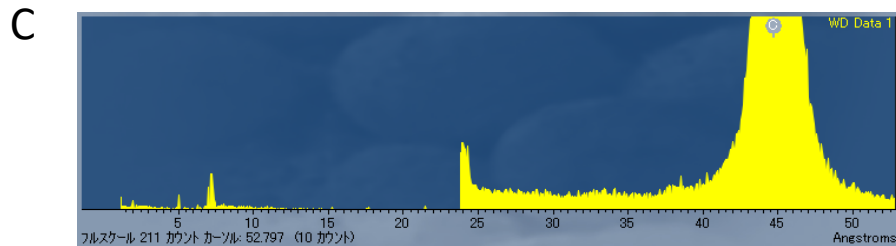
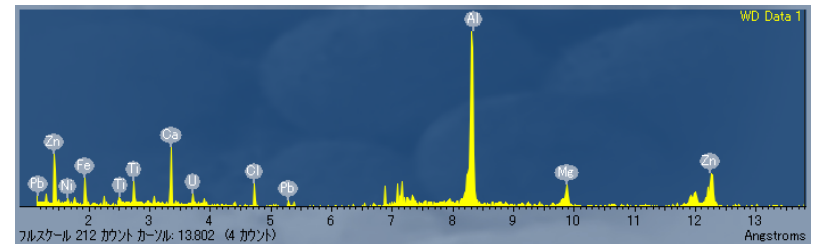
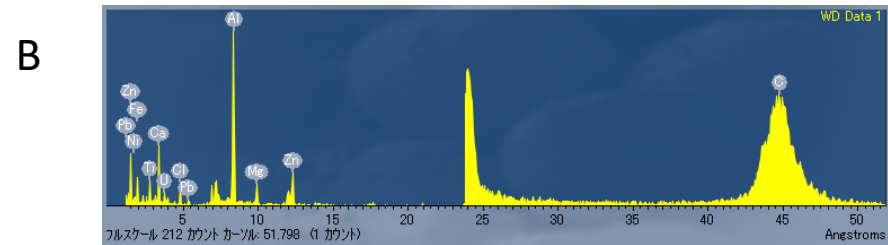
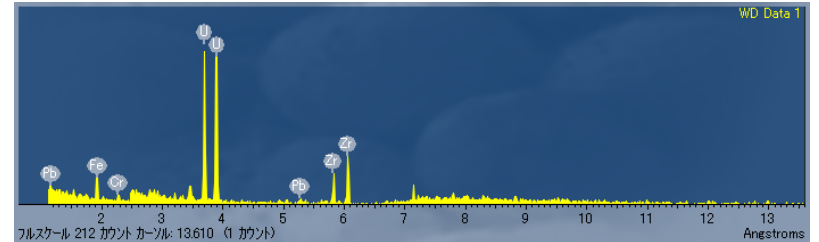
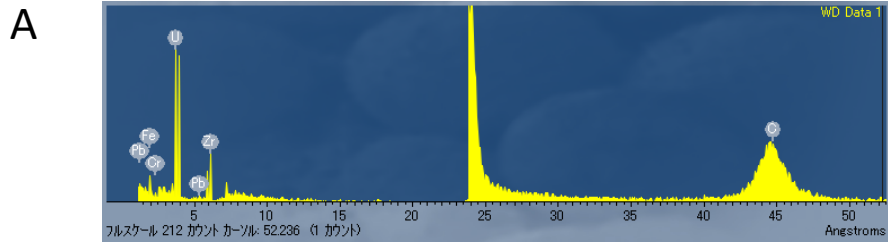
4mm

2号機X-6ペネ調査装置付着物2 (XM212022)

WDS点定性分析

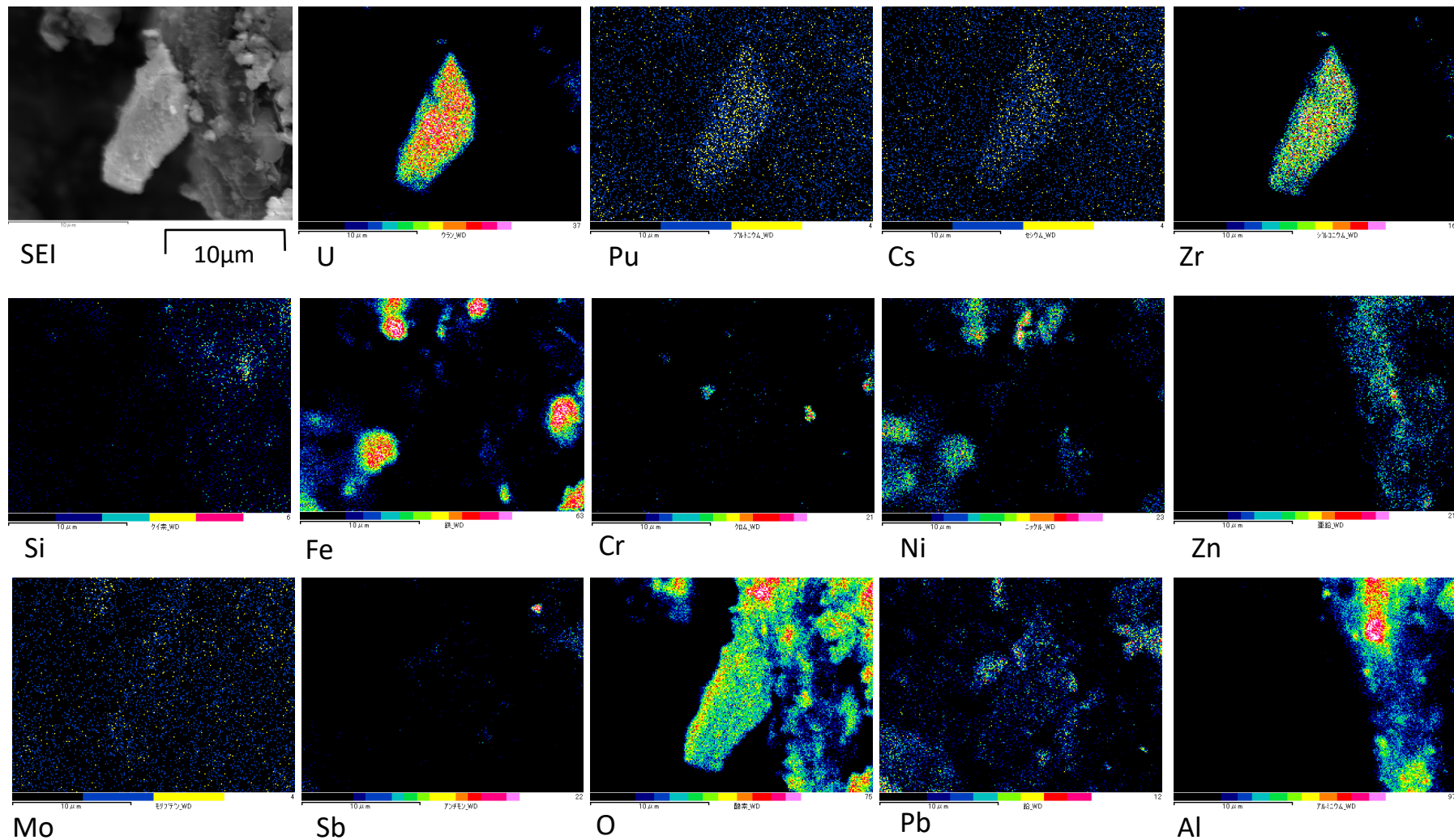


A: U粒子上
B: U粒子以外の粒子上
C: スミア繊維上

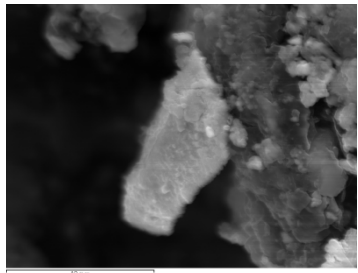


2号機X-6ペネ調査装置付着物2 (XM212022)

各元素面分析(高倍率)1/2

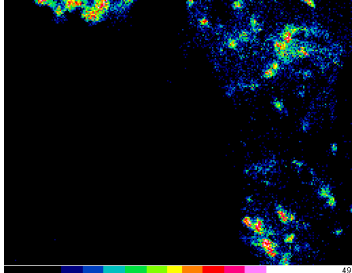


2号機X-6ペネ調査装置付着物2 (XM212022) 各元素面分析(高倍率)2/2

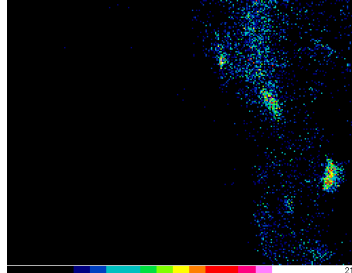


SEI

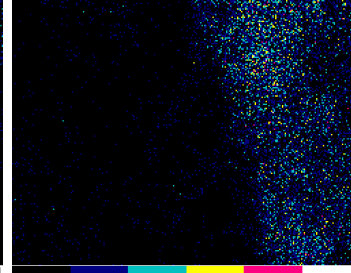
10μm



Ca

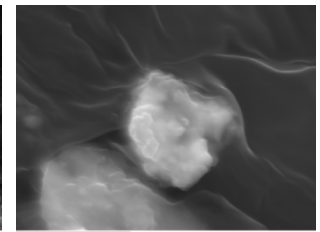
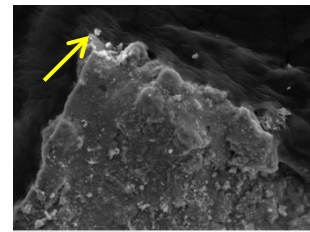
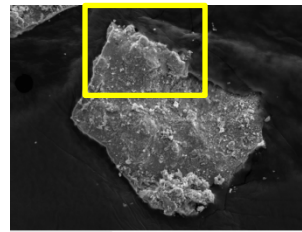
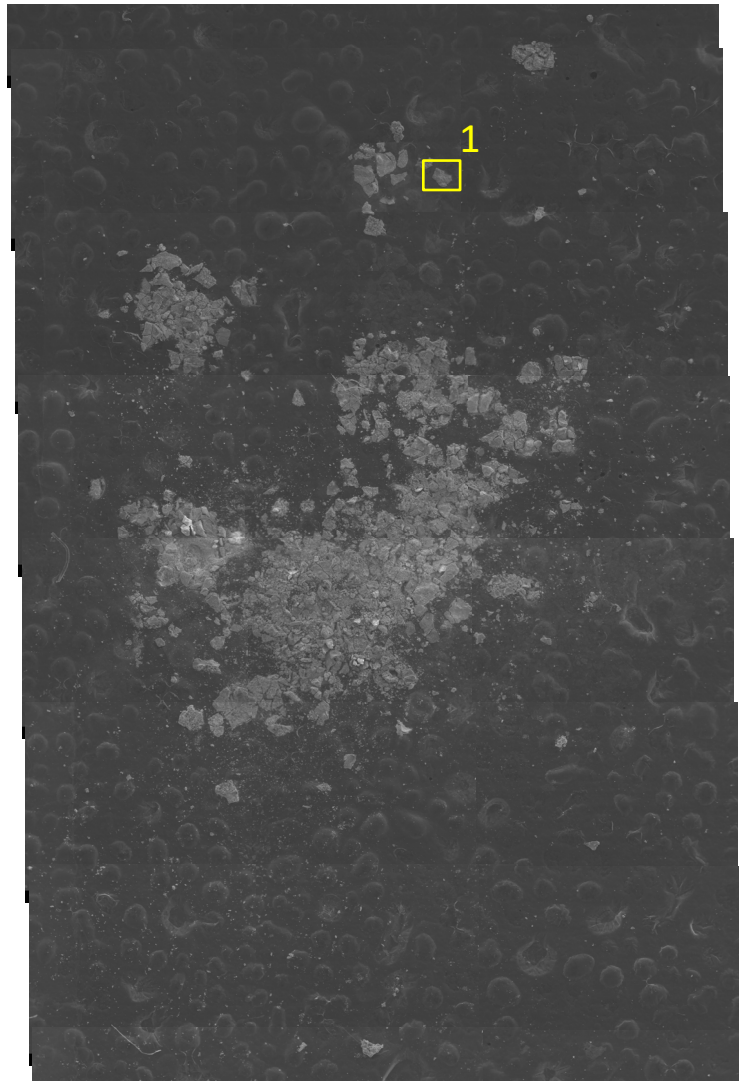


Mg



Cl

2号機原子炉ウエル内調査ウエル差圧調整ライン内堆積物A(XM212032)
全体SEI像



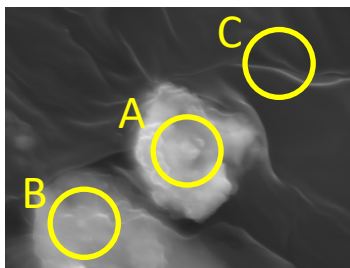
3mm

100μm

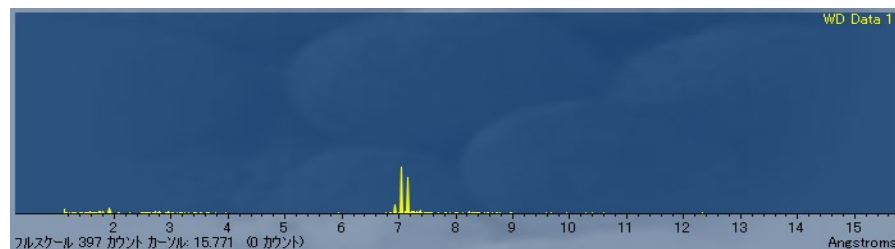
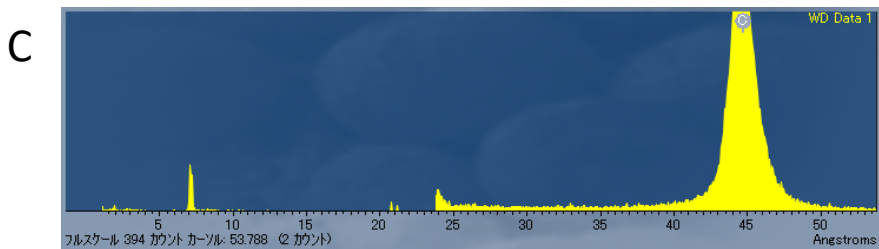
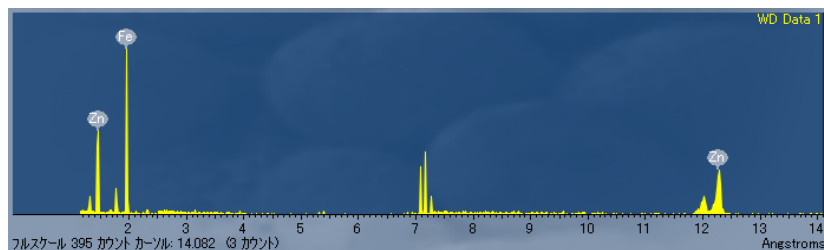
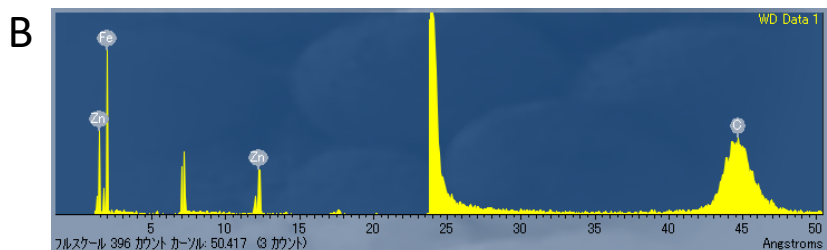
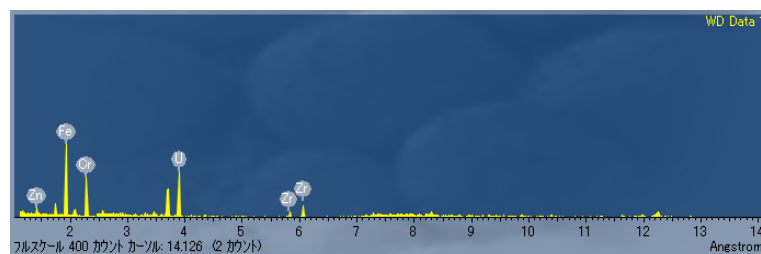
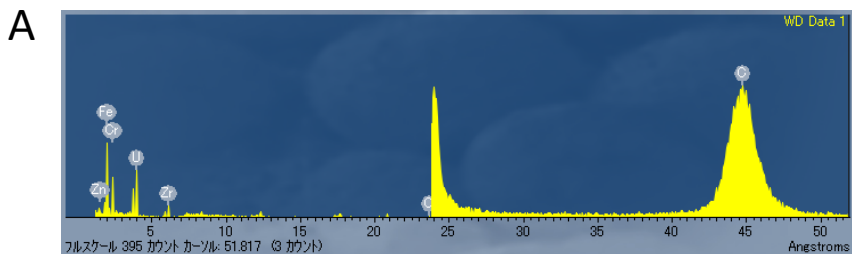
50μm

3μm

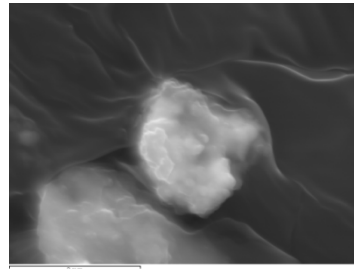
2号機原子炉ウェル内調査ウェル差圧調整ライン内堆積物A(XM212032) WDS点定性分析



A: U粒子上
B: U粒子以外の粒子上
C: カーボンテープ上

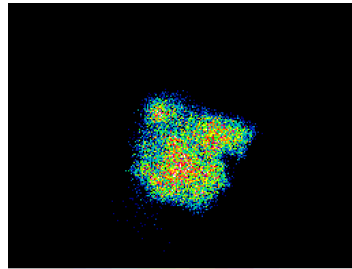


2号機原子炉ウエル内調査ウエル差圧調整ライン内堆積物A(XM212032) 各元素面分析(高倍率)

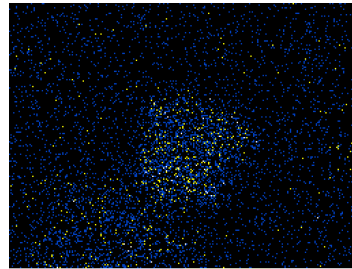


SEI

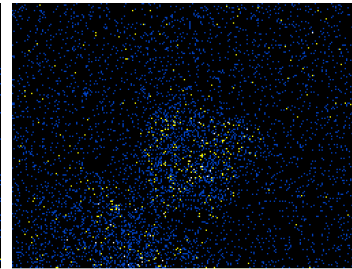
3μm



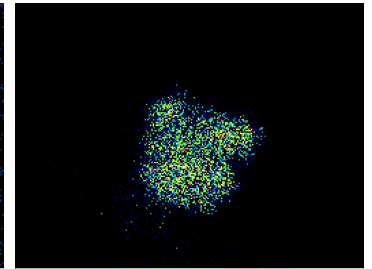
U



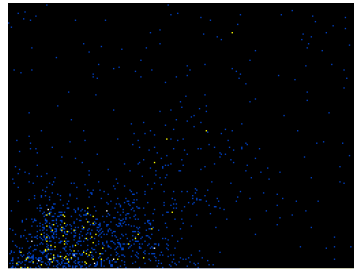
Pu



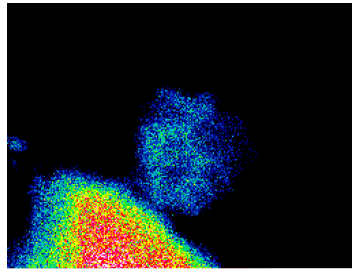
Cs



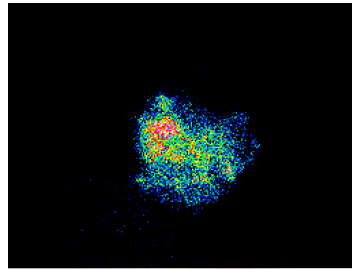
Zr



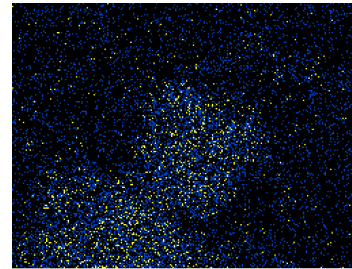
Si



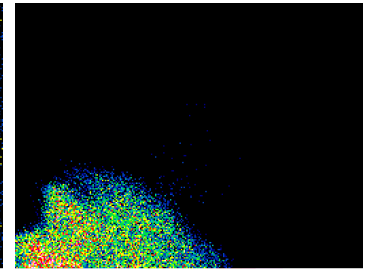
Fe



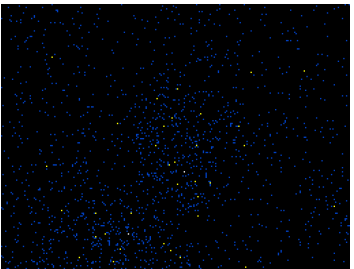
Cr



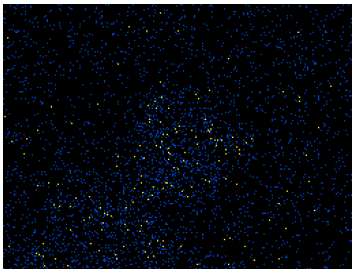
Ni



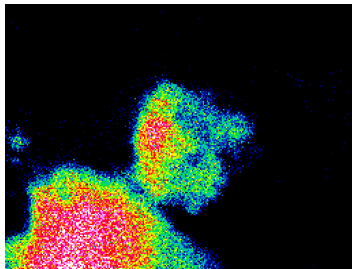
Zn



Mo

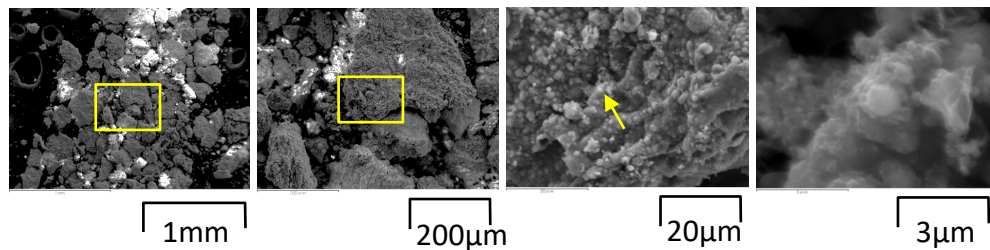
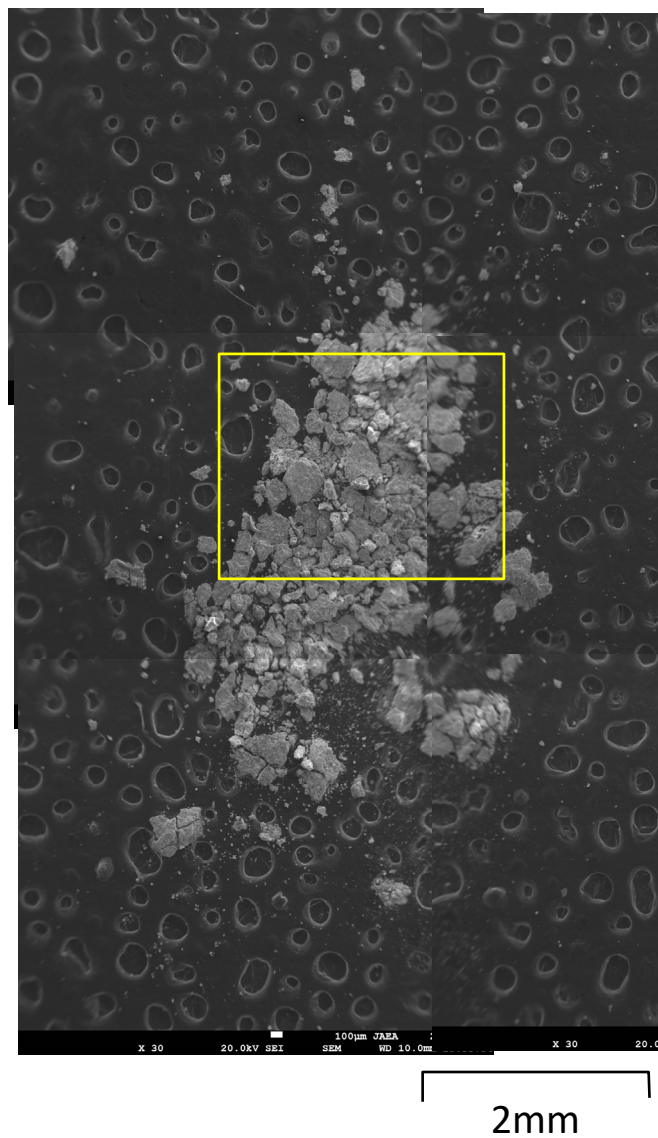


Sb

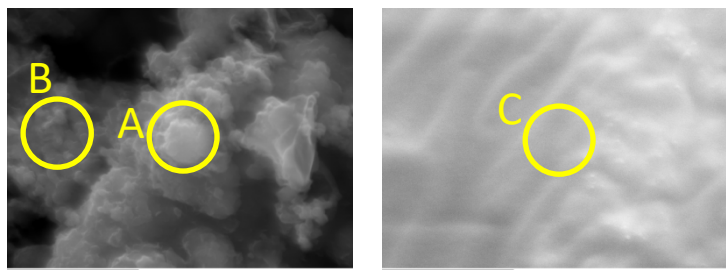


O

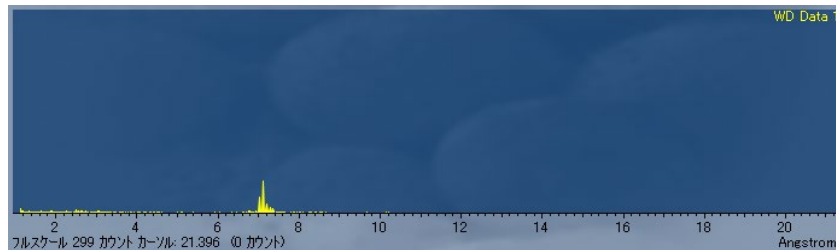
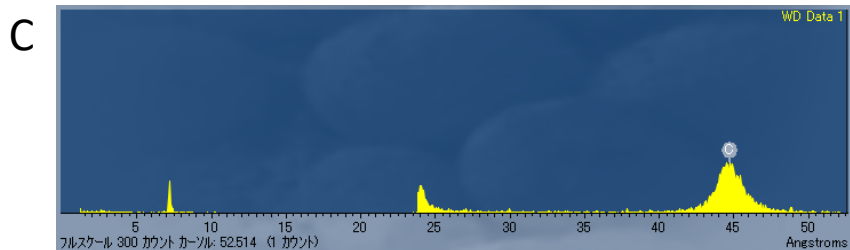
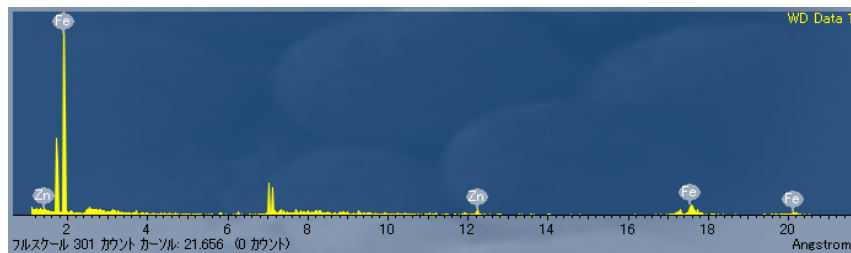
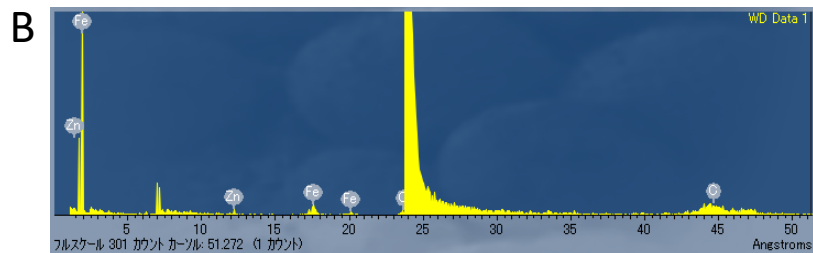
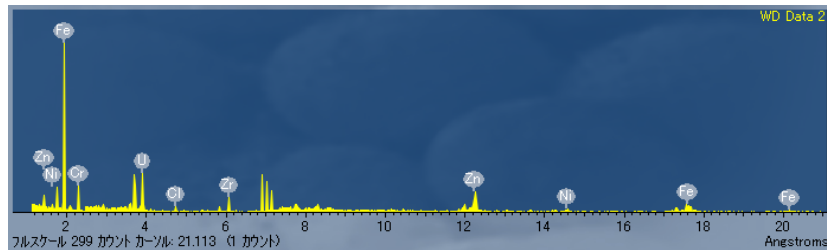
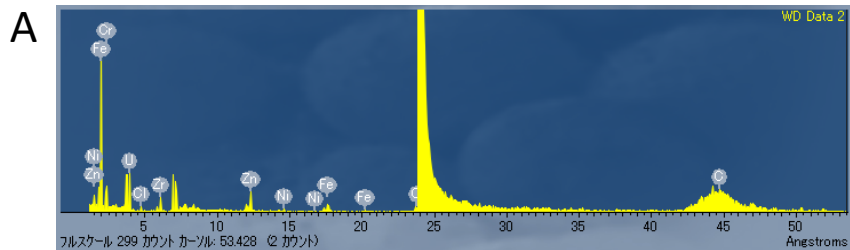
2号機原子炉ウエル内調査ウエル差圧調整ライン内堆積物C(XM212042) 全体SEI像



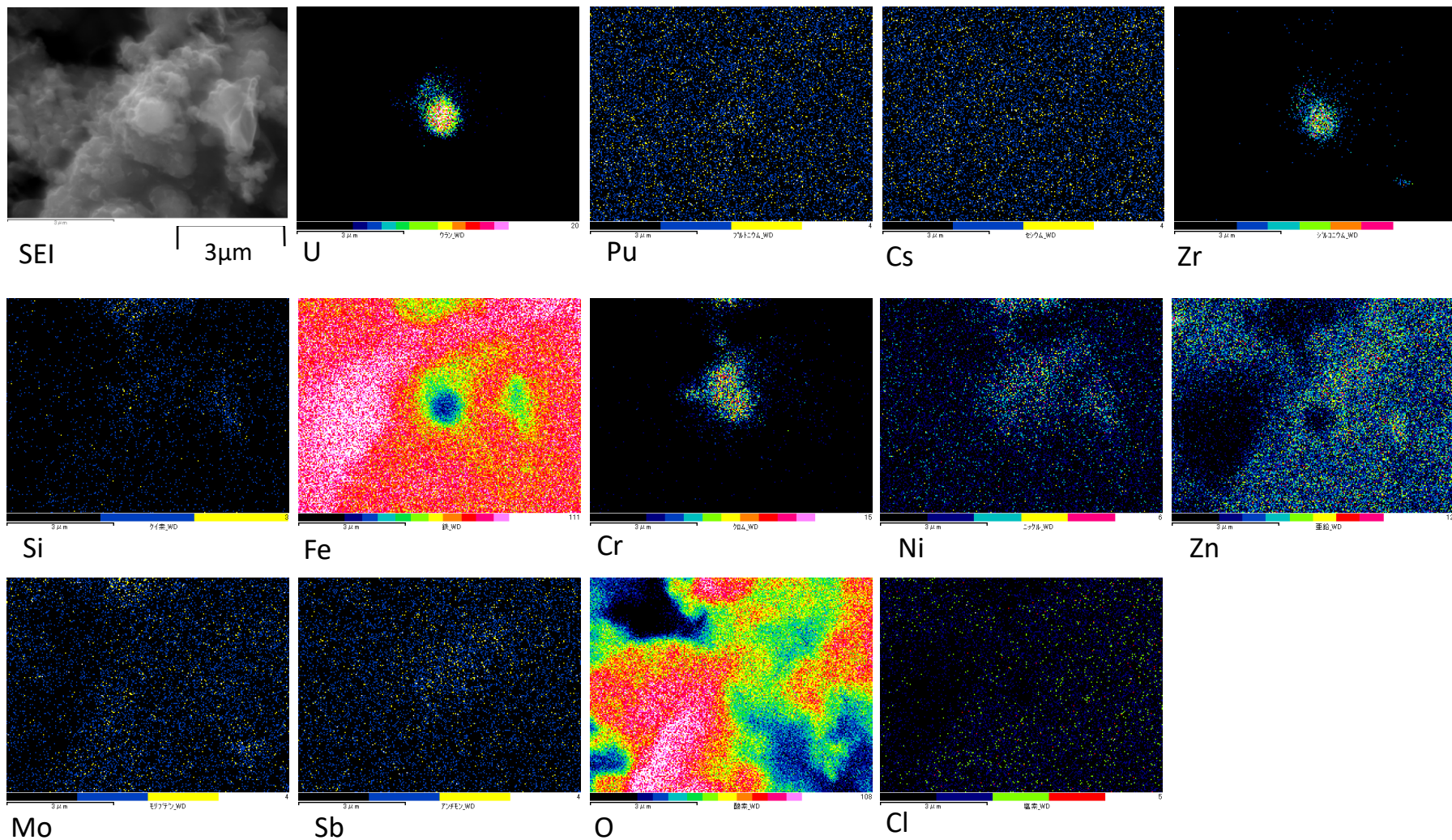
2号機原子炉ウェル内調査ウェル差圧調整ライン内堆積物C(XM212042) WDS点定性分析



A: U粒子上
 B: U粒子以外の粒子上
 C: カーボンテープ上

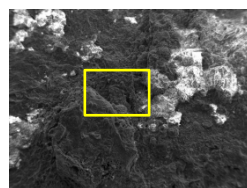
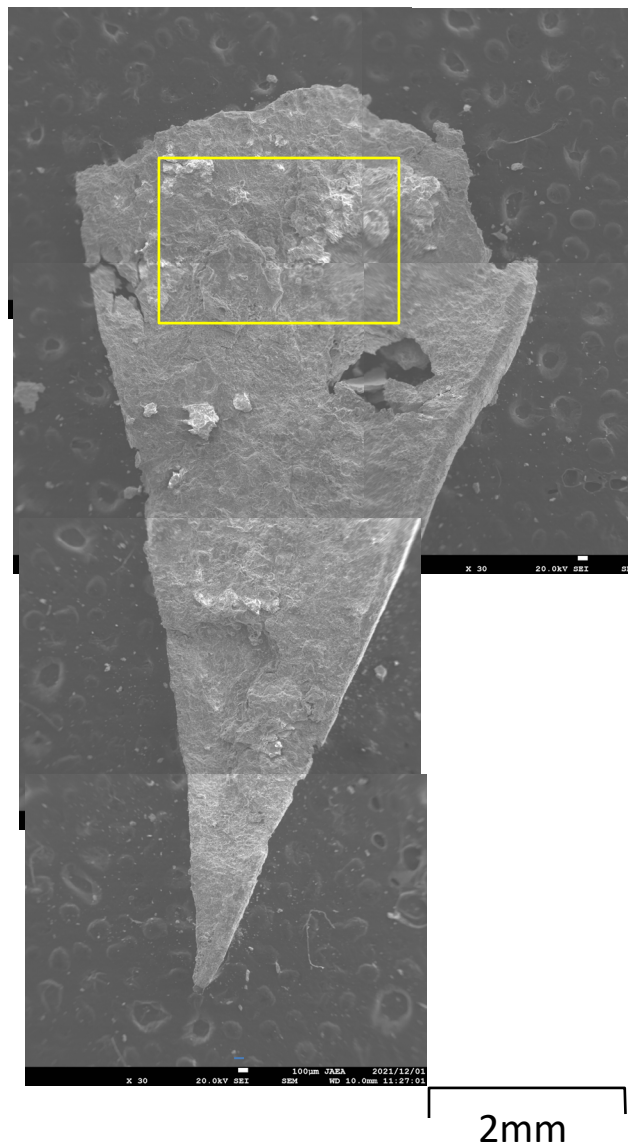


2号機原子炉ウエル内調査ウエル差圧調整ライン内堆積物C(XM212042) 各元素面分析(高倍率)

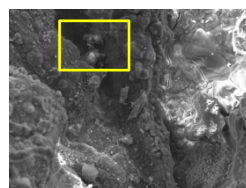


2号機原子炉ウエル内調査排気ダクト劣化部A(XM212052)

全体SEI像



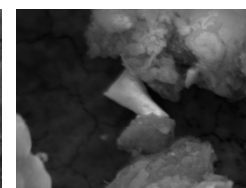
1mm



100µm



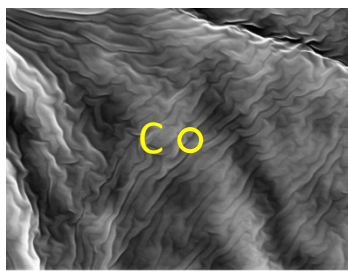
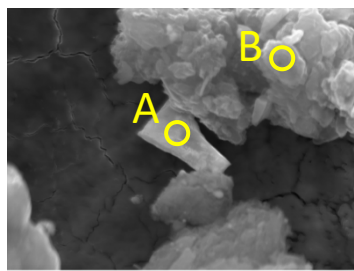
20µm



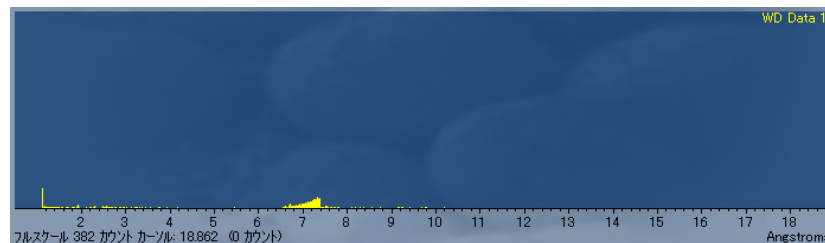
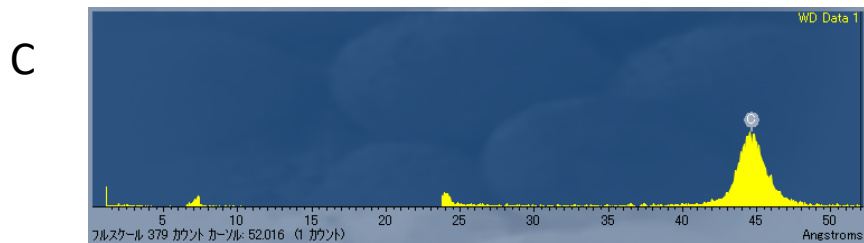
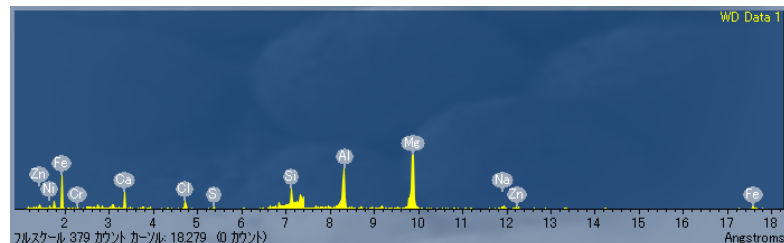
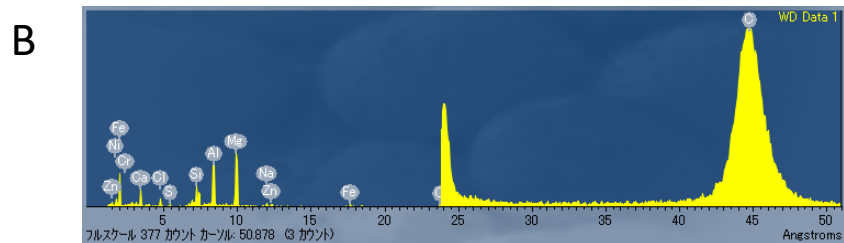
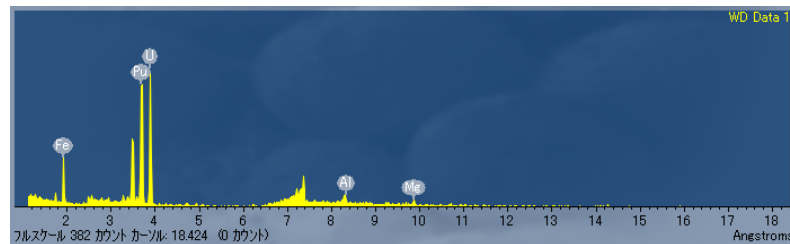
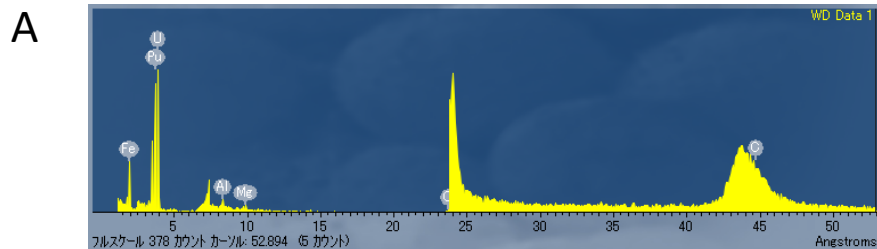
3µm

2号機原子炉ウェル内調査排気ダクト劣化部A(XM212052)

WDS点定性分析

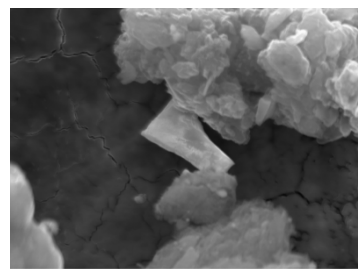


A: U粒子上
 B: U粒子以外の粒子上
 C: カーボンテープ上

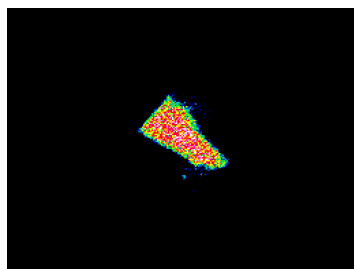


2号機原子炉ウエル内調査排気ダクト劣化部A(XM212052)

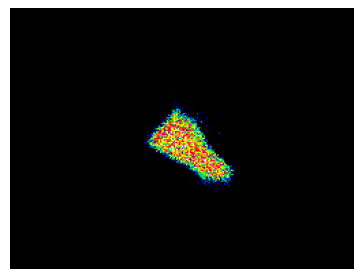
各元素面分析(高倍率)1/2



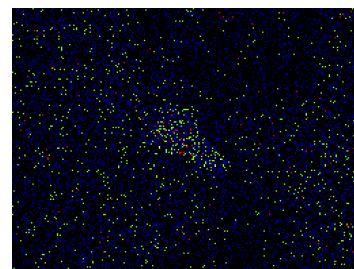
SEI 10μm



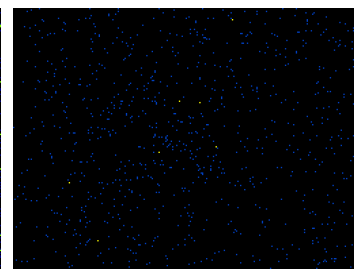
U



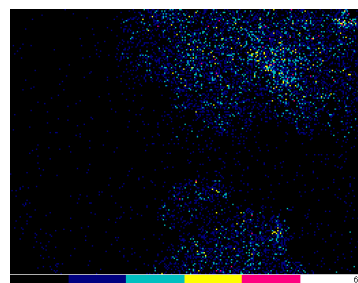
Pu



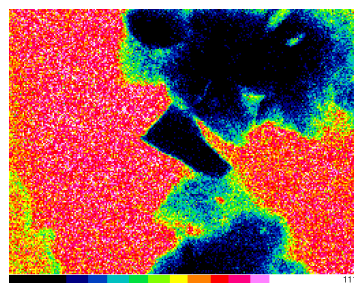
Cs



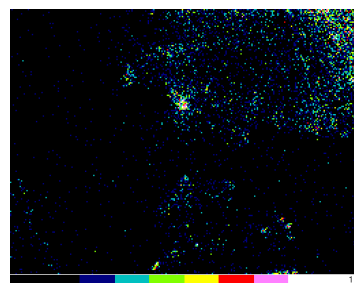
Zr



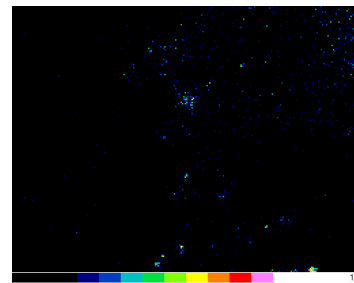
Si



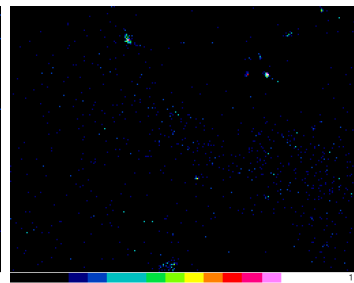
Fe



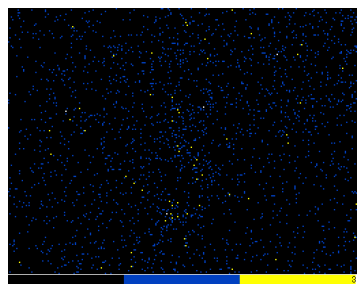
Cr



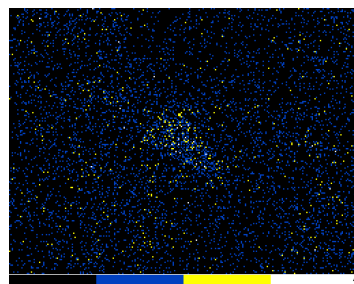
Ni



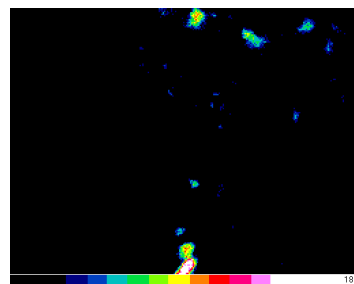
Zn



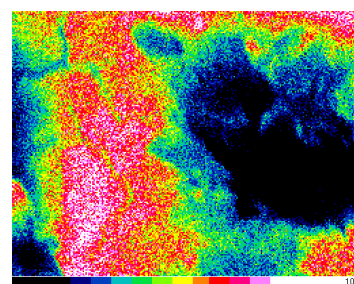
Mo



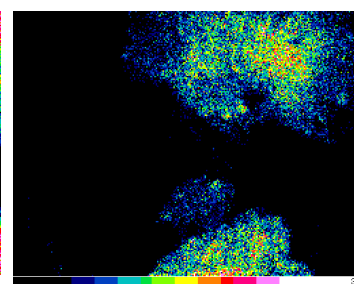
Sb



Al



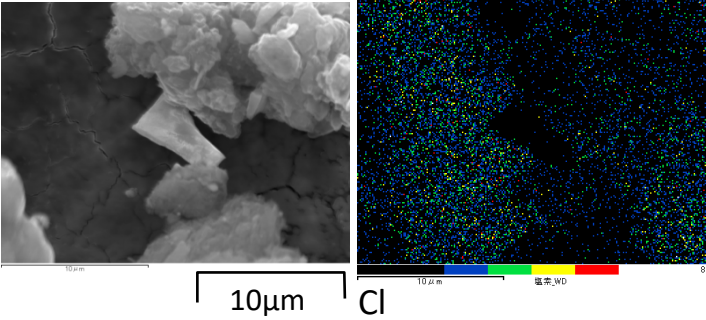
O



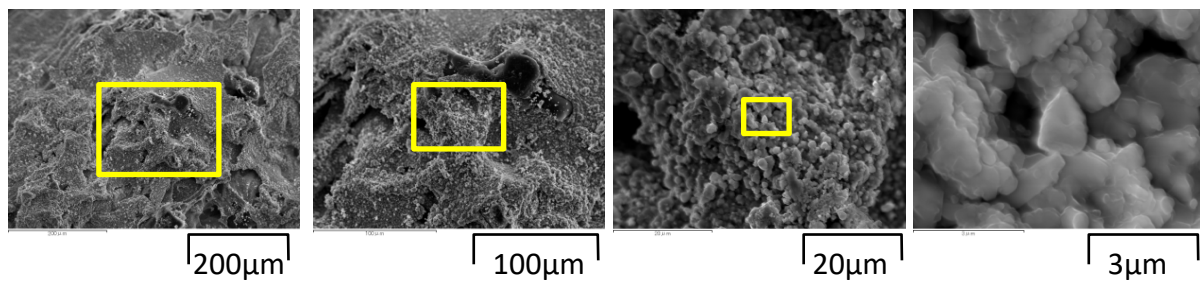
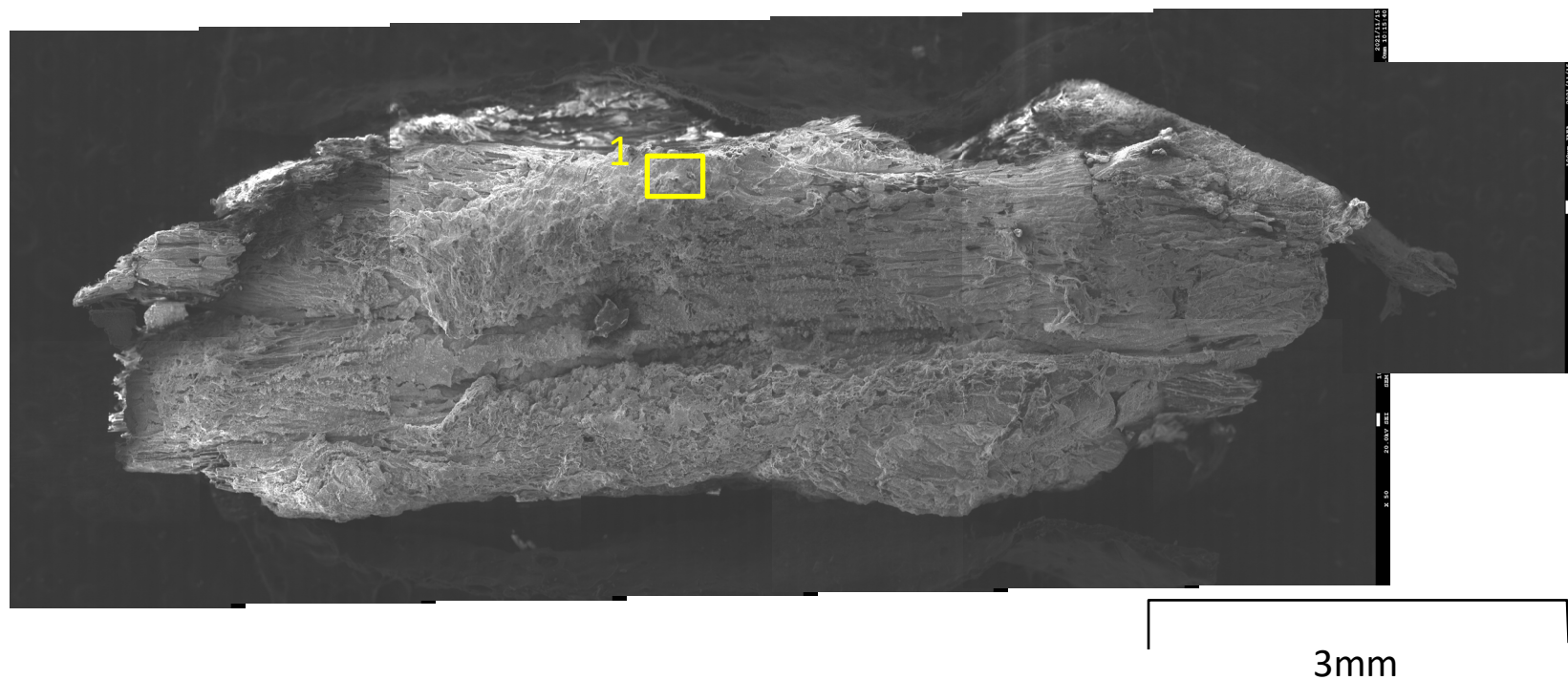
Mg

2号機原子炉ウエル内調査排気ダクト劣化部A(XM212052)

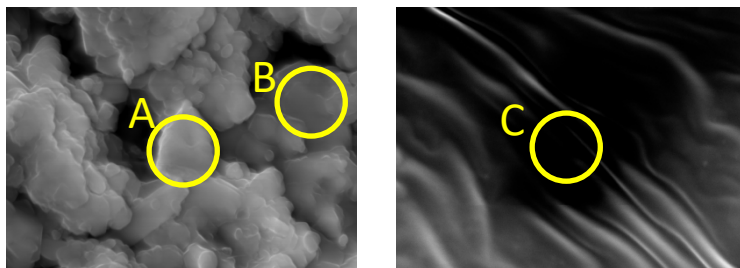
各元素面分析(高倍率)2/2



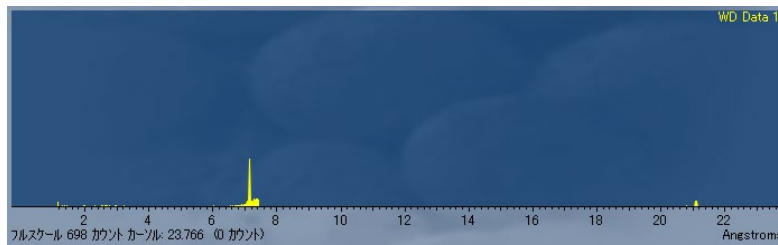
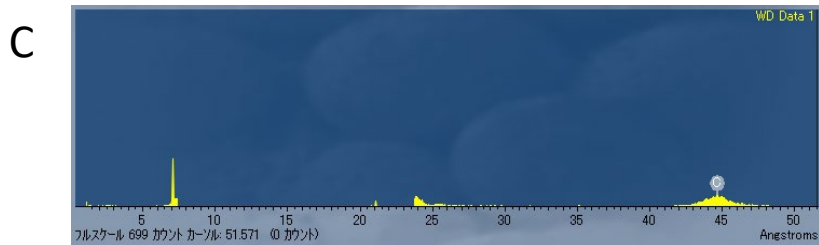
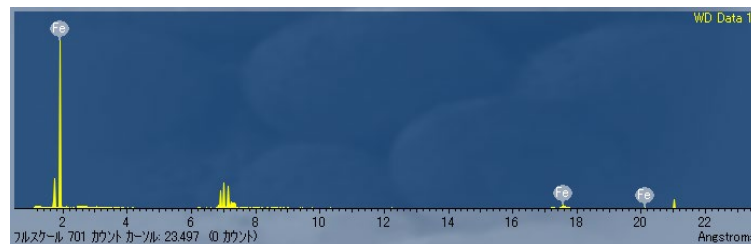
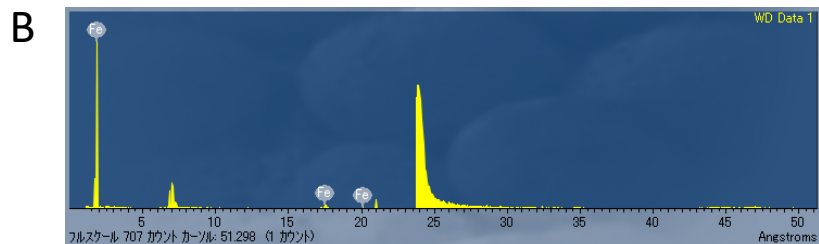
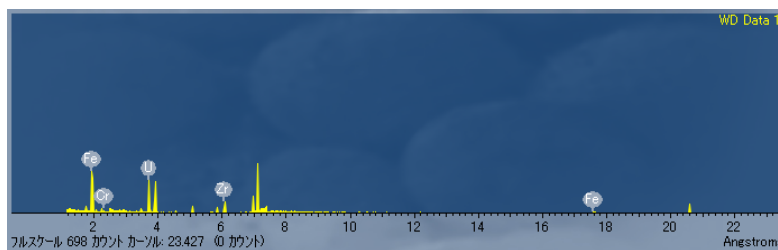
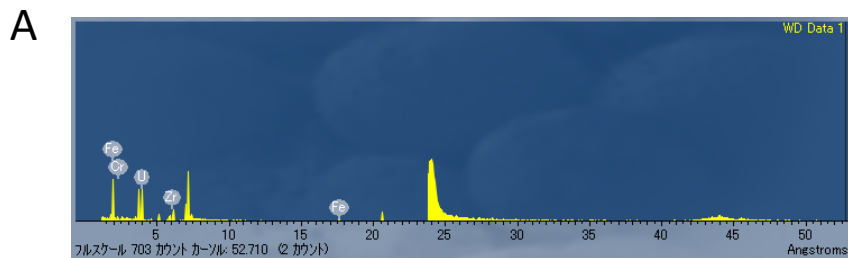
2号機原子炉ウエル内調査排気ダクト点検口表面部A(XM212062)
全体SEI像



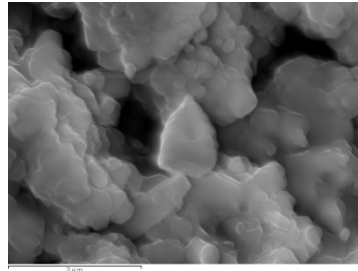
2号機原子炉ウェル内調査排気ダクト点検口表面部A(XM212062) WDS点定性分析



A: U粒子上
B: U粒子以外の粒子上
C: カーボンテープ上

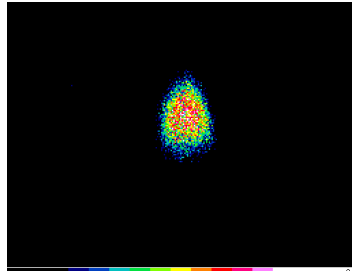


2号機原子炉ウエル内調査排気ダクト点検口表面部A(XM212062) 各元素面分析(高倍率)

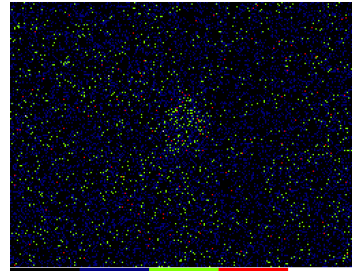


SEI

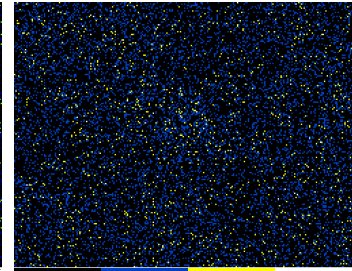
3μm



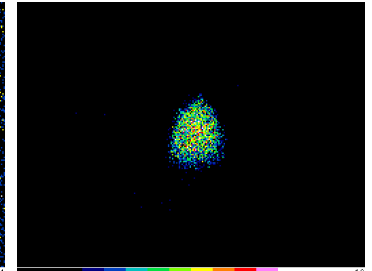
U



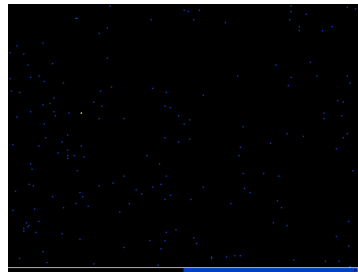
Pu



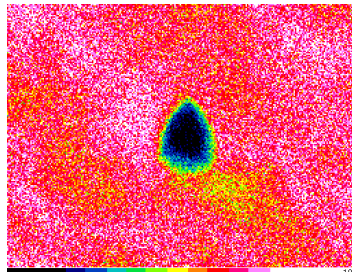
Cs



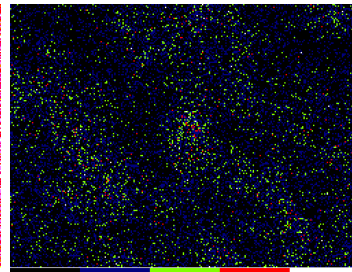
Zr



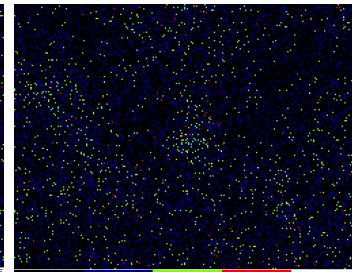
Si



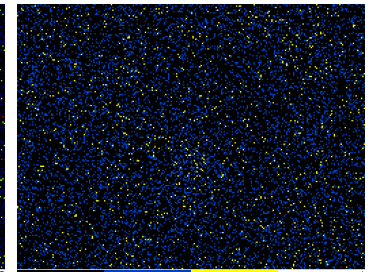
Fe



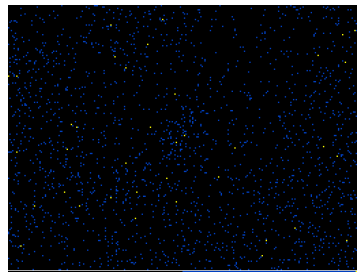
Cr



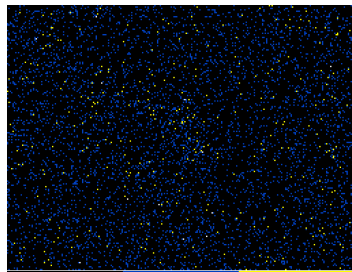
Ni



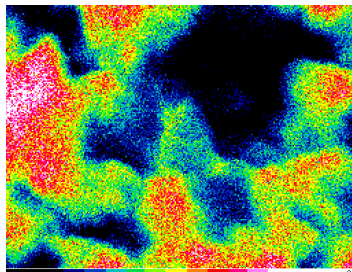
Zn



Mo



Sb



O